
ARCA IT Conference

NGS Users Group Meeting

April 16, 2010

San Diego, California



Introductions

- SANDIS Staff
 - Karen Barros
 - Nancy Lorch
- New Generation Software (NGS)
 - Diana Stater
 - Betty Vernon

New Generation Software (NGS)

- Business Intelligence (includes query & reporting)
- Accounting software
- Optimized for the System i

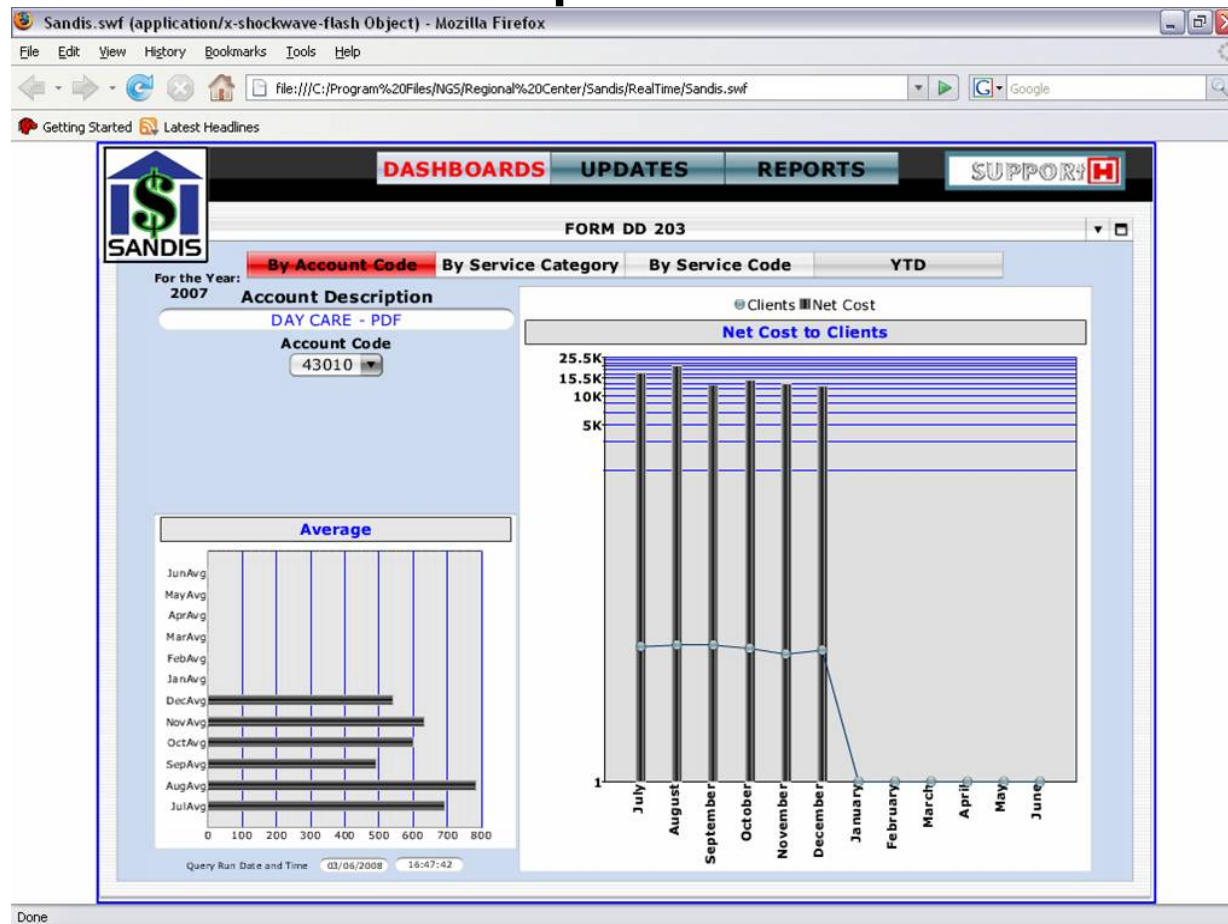


NGS Regional Center Customers

- **Alta California Regional Center**
- **Eastern Los Angeles Regional Center**
- **Far Northern Regional Center**
- **Golden Gate Regional Center**
- **Harbor Regional Center**
- **Kern Regional Center**
- **North Bay Regional Center**
- **North Los Angeles County Regional Center**
- **Regional Center of the East Bay**
- **San Diego Regional Center**
- **San Gabriel/Pomona Regional Center**
- **South Central Los Angeles Regional Center***
- **Tri-Counties Regional Center**

SANDIS Fiscal Portal

Pre-built set of reports and dashboards



Preparing for the Fiscal Portal

■ iSeries

- ❑ Current version of NGS IQ with PTF's installed
- ❑ IQPORT6413 should be running, if not use the command **QIQE/iqtcp**
- ❑ Port 80 (www-http) must be active

■ Network

- ❑ Identify what platform
 - Windows
 - Novell
 - Unix/Linux

■ Personal Computer

- ❑ O/S must be Windows XP or lower*
- ❑ I/E must be 7.0 or lower*
- ❑ QPort/SmartView must be installed (At least Version 6.00.00 or higher)
- ❑ User must have administration rights to install software
- ❑ Flash Player (current version) must be installed



Maintaining the Fiscal Portal

- You can update the dashboard as often as needed
- The dashboard will accurately match the DDS DD203 if you update it immediately after the State Claim final is run
- You can produce an Excel output for this
- Produce 2 different types of SmartViews, which allow you to drill down to the detail of the data
- This detail can then be copied and placed in an Excel spreadsheet for later use



SANDIS Fiscal Portal-Routine Updates

The screenshot displays a web browser window with the SANDIS Fiscal Portal. The browser's address bar shows the file path: C:\Program Files\NGS\Regional Center\Sandis\RealTime\Sandis.swf. The page features a navigation menu with four tabs: DASHBOARDS, UPDATES (highlighted in red), REPORTS, and SUPPORT. The main content area is titled 'UPDATES' and lists three categories of updates:

- DD203:** [DASHBOARD and REPORTS](#)
- MONTHLY STATUS:** [DASHBOARD and REPORTS HTML](#)
- BUDGET:** [DASHBOARD and REPORTS](#)

The background of the update section is a scenic image of a waterfront with a palm tree in the foreground and a city skyline in the distance. The Windows taskbar at the bottom shows the Start button, several open applications, and the system tray with the time 9:08 AM.

SANDIS Fiscal Portal-Reports

The screenshot shows a web browser window displaying the SANDIS Fiscal Portal. The browser's address bar shows the file path: C:\Program Files\NGS\Regional Center\Sandis\RealTime\Sandis.swf. The page features a navigation menu with four tabs: DASHBOARDS, UPDATES, REPORTS (which is highlighted in red), and SUPPORT. The SANDIS logo is located in the top left corner. The main content area is titled "REPORTS" and lists various report categories and their available formats:

- DD203:**
 - [PDF](#)
 - [EXCEL](#)
 - [SMARTVIEW by OFFICE](#)
 - [SMARTVIEW by VENDOR/CLIENT](#)
- MONTHLY STATUS:**
 - [HTML](#)
 - [EXCEL](#)
- OPERATIONS:**
 - [SMARTVIEW](#)
- BUDGET:**
 - [EXCEL](#)

The background of the report area is a scenic image of a waterfront city with palm trees and buildings.

Using NGS Programs

- The first NGS Workshop was held at SG/PRC in 4/2008
- Naming conventions and report sharing ideas were reviewed
- Suggested website for Reports “Inventory”



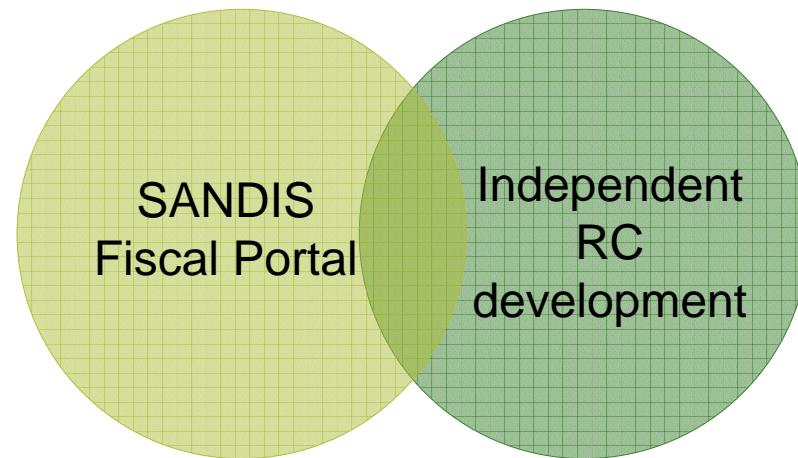
Using NGS Programs

- Utility for Sharing NGS Reports is now available
- Updated File Layouts for SANDIS and UFS are available on the SANDIS FTP Site
- Website of Reports Inventory is being developed



Using NGS Programs

- Pre-built reports and dashboards
- Independent development by RCs
- What does it take to use *NGS-IQ*?
- Who uses *NGS-IQ*?

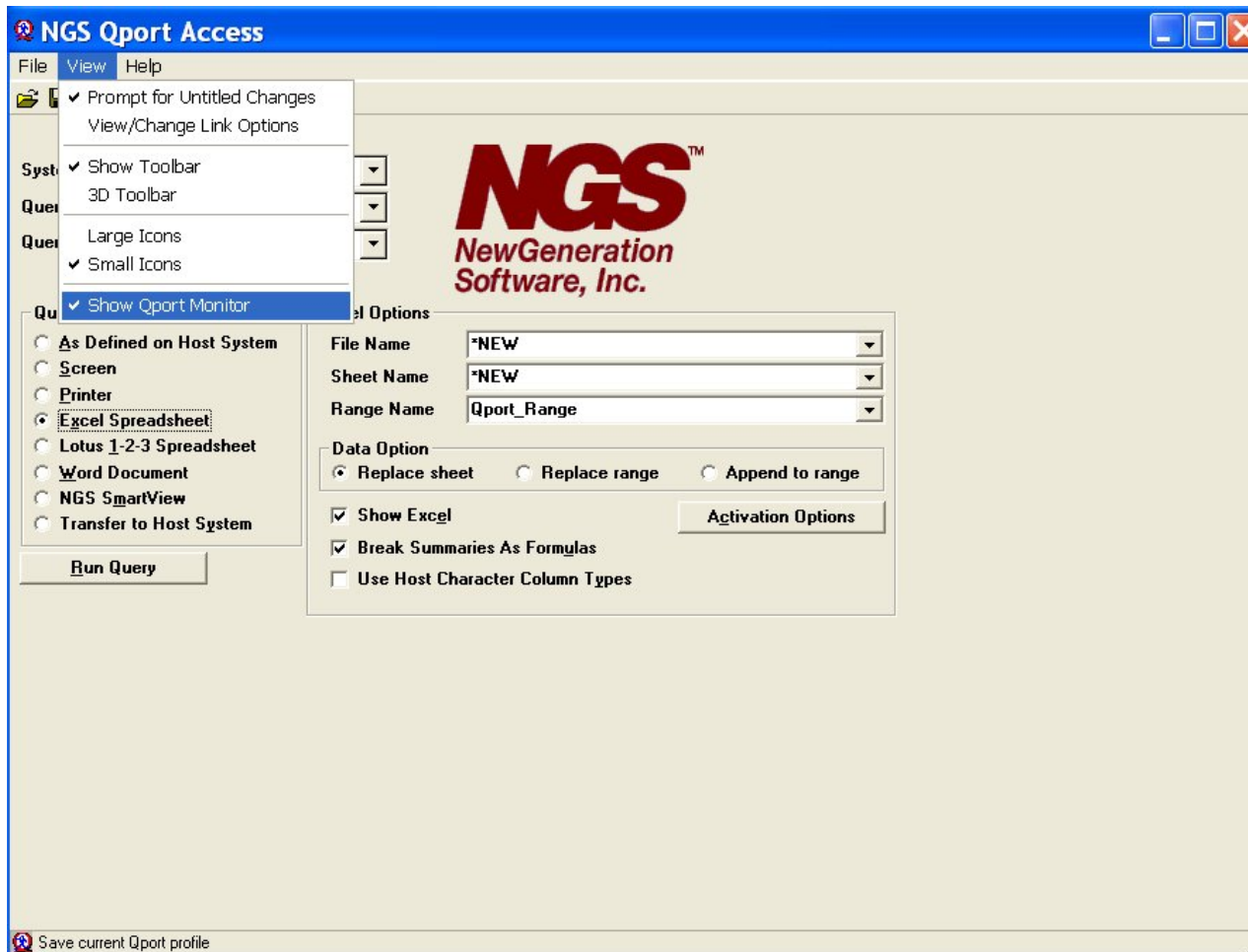


Using NGS Programs

- NGS Techniques to know
 - Email report capability/other data output options
 - Creating meta files
 - *NGS-IQ 7.0* release features
 - Web Runner
 - Web Links
 - Sending of reports with or without results
 - Etc.

Using NGS Programs

- Qport Access Monitor



Using NGS Programs

Qport Access Monitor

	Profile	Product Name	Query	Library	System
✓	Untitled	Qport Access	DEMO_BASE	IQTUTORIAL	NGSIQ.COM
✓	Untitled	Qport Access	DEMO_SHIP	IQTUTORIAL	NGSIQ.COM

Query ended successfully 4/5/2010 8:41:20 AM
Query initiation in progress... 4/5/2010 8:41:05 AM
Starting... 4/5/2010 8:41:05 AM

Delete Title Delete All Hide

Using NGS Programs

- NGS Techniques to know
 - IQ Client
 - *SmartView* enhancement
 - IQ Connexion



Using NGS Programs

- Need a review of *NGS-IQ*?
 - What are the various NGS software options?
 - How do I know what my RC has?
 - How do I know who has access to the program?
 - How does licensing work?
- NGS offers software training and support
 - 1-800-257-2442 (NGS Technical Support)

NGS Users Group

Thanks for Coming!



(c) SANDIS Solutions



NGS Users Group, April 16, 2010